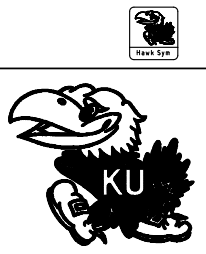


REVISION RECORD			
REV	ECO	APPROVED	DATE
A	Original		

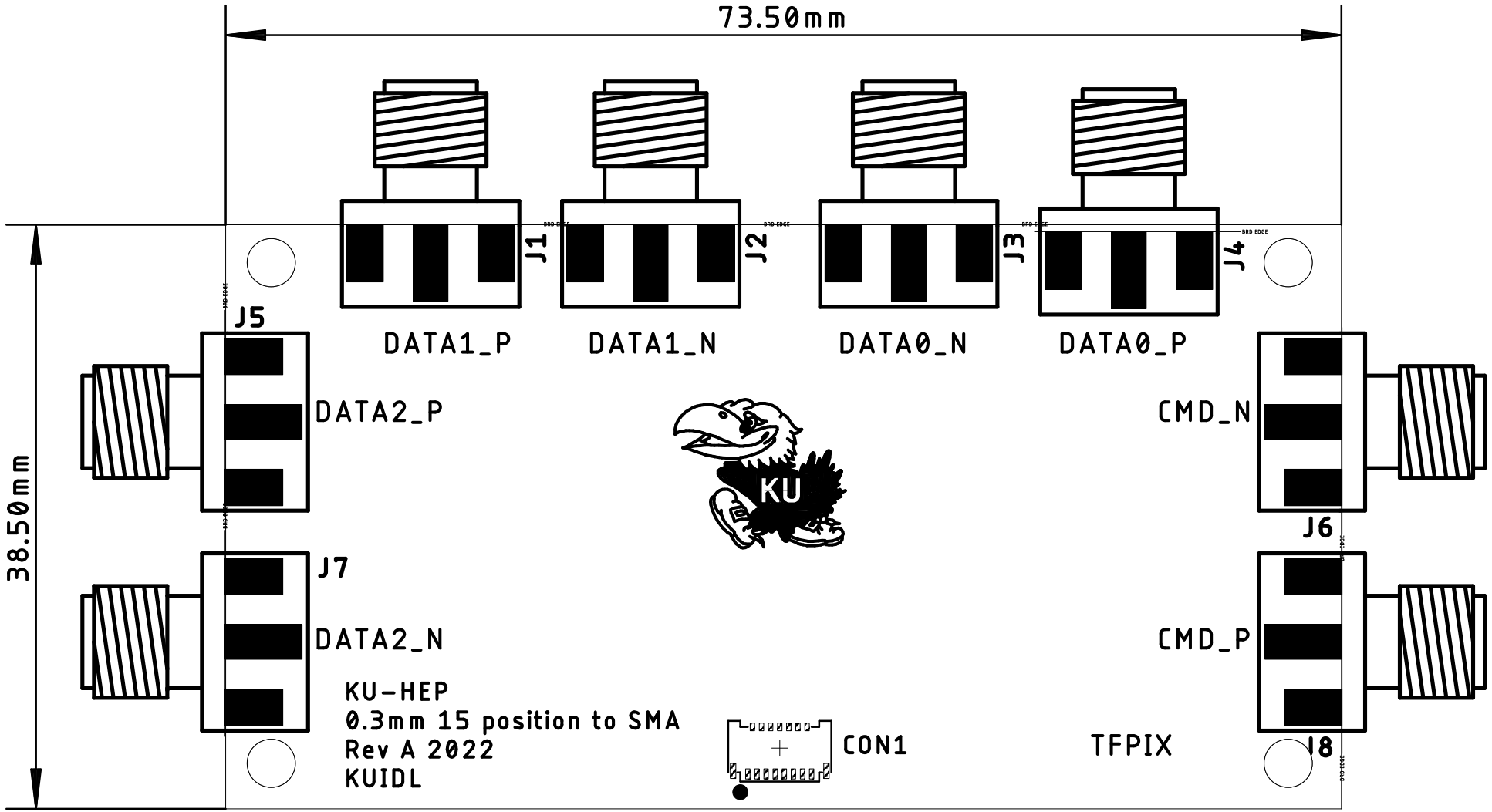
INSTRUMENTATION DESIGN LAB
 1251 Wescoe Hall Dr.
 Lawrence, KS 66045
 (785) 864-3754
<http://www.idl.ku.edu>



Project: Molex 15-position Paddle Board to SMA	TFPIX
Sponsor: A. Bean	
Date: 3/21/2022 10:00 AM	Sheet: 1/1

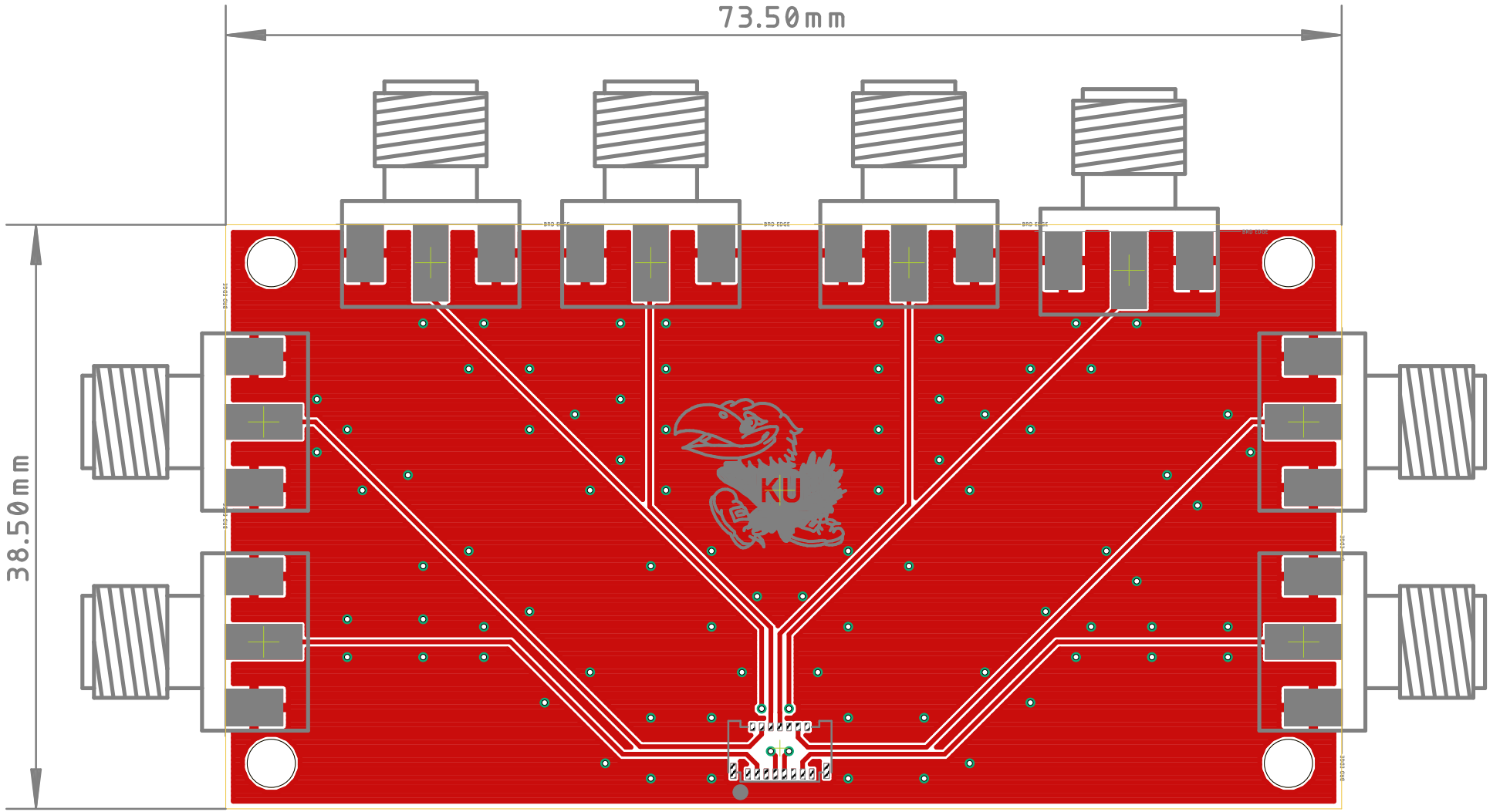
73.50 mm

38.50 mm



73.50 mm

38.50 mm



mm 02.57

mm 02.85

