

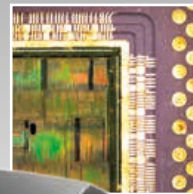
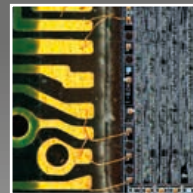
From Eye to Insight



For digital visualization and documentation

# CAPTURE, DOCUMENT, AND SHARE IMAGES IN SECONDS

12 MP stand-alone microscope camera  
FLEXACAM C1



# CAPTURE, DOCUMENT, AND SHARE IMAGES IN SECONDS

Save time and effort when capturing, documenting, and sharing images. The FLEXACAM C1 camera transforms your microscope into a stand-alone digital imaging station with no need for a PC. Simply connect the camera to your microscope, preferred viewing device, and network and start working!

- > Stand-alone operation and integrated on-screen display (OSD): Save time and effort when capturing, annotating, and sharing images directly via a monitor without the need for a PC
- > Adaptable workplace setup: Simply connect the camera to your preferred viewing device and network
- > Image quality: See more details with crisper images and true-to-life colors

## Save time and effort with stand-alone operation and integrated OSD



With no need for a PC, the FLEXACAM C1 in stand-alone mode enables you to complete your daily imaging tasks quickly and simply.

Adjust and operate the camera, then annotate and share your images and videos all via the intuitive on-screen tools.

### **View, record, and share in seconds**

- > View images directly on your monitor and record videos in full HD with up to 30 frames per second
- > Save images to your local network or send as email attachment for easy sharing and storage

### **Enhance your documentation**

- > Annotation: Add text and graphical elements directly to the image
- > Overlay: Create customized overlays for a direct and continuous comparison

## Adapts to your workplace setup

No need to adapt your working style, the camera is adaptable to you. Simply connect the FLEXACAM C1 in various ways with your viewing devices and network.



- ❶ The HDMI mode allows you to use the camera in stand-alone mode without the need for a PC
- ❷ Use the Ethernet mode to work with direct access to your facility's network
- ❸ Save images directly on a USB stick when the camera is used in stand-alone mode
- ❹ For workplaces without network access you can choose the USB mode to connect the camera and software directly with your PC
- ❺ Easily connect a USB mouse, keyboard, or Wi-Fi dongle

## See more with crisper images

The FLEXACAM C1 displays true-to-life color images in high resolution. You can view images in full HD or 4K and capture fine details of your sample whether for industrial, life science, forensic, or educational applications.

- > Large dynamic range: Provides true-to-life colors
- > 12 MP CMOS sensor: Reveals fine details in acquired images
- > Fast auto exposure: Allows quick screening of samples with bright and dark areas



Swiss bank note

# SPECIFICATIONS

Sensor type	CMOS
Sensor size	1 / 2.3"
Sensor resolution	H: 4,000; V: 3,000
Total number of pixels	12 MP
Pixel size	1.55 µm × 1.55 µm
Gain	0–42 dB
Exposure time HDMI	100 µs – 120 ms
Color depth	3 × 8 bit = 24 bit
Live resolution HDMI	4K – 30/60 fps
	1080 p – 30/60 fps
	720 p – 30/60 fps
Recording resolution	1080 p – 30 fps
	720 p – 30/60 fps
Mechanical interface	C-mount
Filter	650 nm IR cut-off filter
Electronic interface	USB 3.1 Gen1 Type C
	HDMI 2.0a
	4 × USB 2.0
	Ethernet RJ45
	2.5 mm JACK connector for hand- / footswitch
Power supply	External power supply
Power consumption	< 10 W
Software	On-screen display (OSD) for stand-alone operation
	LAS X for Windows

CONNECT  
WITH US!



Leica Microsystems GmbH · Ernst-Leitz-Strasse 17–37 · D-35578 Wetzlar  
T +49 6441 29-4000 · F +49 6441 29-4155

[www.leica-microsystems.com](http://www.leica-microsystems.com)